

SOLVING

Air Bearings for the Stage Theatre Semicon Factories and Sports Industries



Seating Movement Devices

Solving Theatre Air Bearings are intended for the unique requirements of auditorium seating, seating wagons and telescopic seating units.

Theatre Air Bearings are designed for use on polished timber, vinyl or sports floors, and can carry loads of up to 20 tonnes over steps and cracks in the floor. This means, for example, that the clearance gaps surrounding stage lifts or revolves can be traversed using Solving Theatre Air Bearings.

Electrically Powered

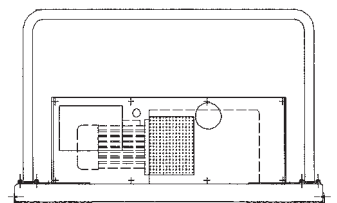
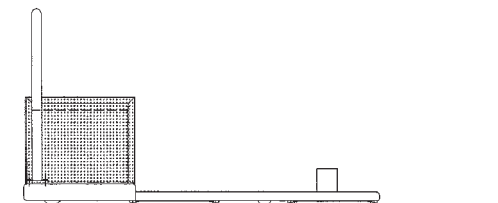
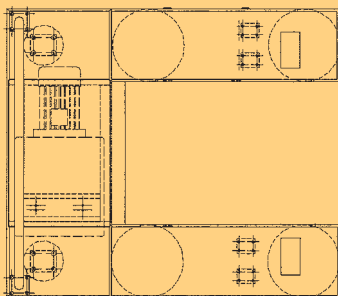
No external compressed air supply is required.

Each Solving Theatre Air Bearing installation incorporates its own blower, providing the low pressure compressed air needed to float the load.



Crossing Gaps and Steps

Depending on the load and the space available, gaps of up to 15mm and steps of up to 10mm can be accommodated. The unique 'perforated' air bearing design minimises the air loss due to flooring imperfections, enabling the pressure zone under the air bearing to be retained at all times.



SOLVING

Korea Agent : Sameee Corporation

Tel: +82(0)31-494-1691 Fax: +82(0)31-492-1690 E-mail: avnc@avnc.co.kr www.avnc.co.kr

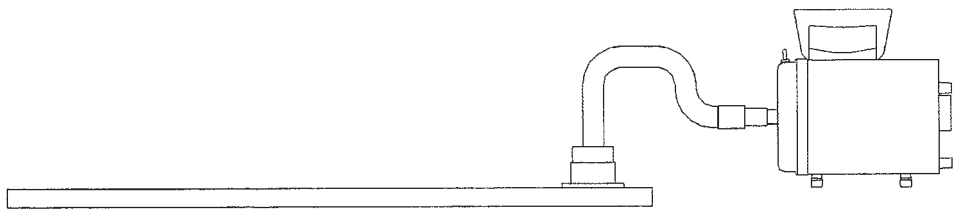
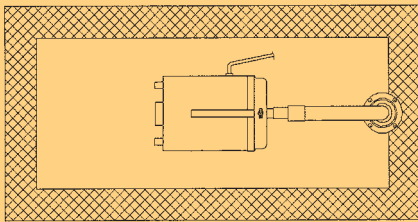
Options Available

Permanently installed air bearings and blowers



Primarily for seating wagons, the permanently installed type TB 400 theatre bearing has a capacity of 250 to 400kg. Each TB 400 combines with a dedicated 1hp blower unit (type AB 400), ensuring that eccentric loads can be accommodated without adjustment. A minimum of 3 combination TB/AB 400 units are required in each wagon to ensure stability, and two men can easily move 2000kg 'on air'.

Blower units are single phase, but are normally connected to a 3-phase supply via a single armoured flexible cable. A remote 'deadmans' pendant is used to operate the blowers and the air bearing inflates by 20 to 30mm in preparation for the move. The 'air film' is then formed under the load, and this enables the seating wagon to be relocated with ease and precision.



Removable 'U'-shaped transporter units



Used in pairs, each 'U'-shaped transporter is equipped with four or six air bearings and an integral blower pack, providing a capacity of up to 3 tonnes or 6 tonnes for the pair. Three-phase cable connects each transporter to an electrical supply, and castor wheels enable the pair of transporters to be positioned under the telescopic seating unit. Switching on the blowers then allows the air bearings to be inflated, and this raises the load clear of the floor for movement and relocation. Four men can move a 6-tonne load over a polished timber or synthetic floor.

Removable air beams



For lighter or more rigid loads, pairs of beams or planks are available, each incorporating two air bearings. These are located under the load using transit castors, and then connected to a mobile 3-phase blower pack located nearby. Operating the blowers inflates the air bearings and allows the load to be lifted prior to relocation.



Korea Agent
Sameee Corporation
Tel +82(0)31 - 492 - 1691
Fax +82(0)31 - 492 - 1690
E-mail: avnc@avnc.co.kr www.avnc.co.kr

Available Sizes: The permanently installed TB 400 air bearing is available in one size only: 920mm x 470mm. Solving drawing 3-0658 is available upon request, showing the air bearing and blower arrangement (TB/AB 400).

Air beams and 'U'-shaped transporter units are available to suit any telescopic seating unit design, and are custom-designed to suit specific requirements.

Solving air bearings are available to suit any load-moving requirement, and our engineers are available to assist with further information or design concepts.